

STORM Prague BC 2014 - 5. turnaj



Oil Pattern Distance:	35 Feet	Reverse Brush Drop:	35 Feet	Oil Per Board:	40 uL
Forward Oil Total:	15.08 mL	Reverse Oil Total:	7.16 mL	Volume Oil Total:	22.24 mL
Forward Boards Crossed:	377 Boards	Reverse Boards Crossed:	179 Boards	Total Boards Crossed:	556 Boards

	Start	Stop	Loads	Speed	Crossed	Start	End	Feet	T.Oil
1	2L	2R	1	14	37	0.0	0.0	0.0	1480
2	2L	3R	1	14	36	0.0	1.9	1.9	1440
3	3L	4R	1	14	34	1.9	3.8	1.9	1360
4	4L	5R	3	14	96	3.8	9.7	5.9	3840
5	5L	6R	3	18	90	9.7	17.3	7.6	3600
6	6L	7R	3	18	84	17.3	24.9	7.6	3360
7	2L	2R	0	22	0	24.9	35.0	10.1	0

Conditioner: ICE

TransferType:
Transfer Roller

Forward



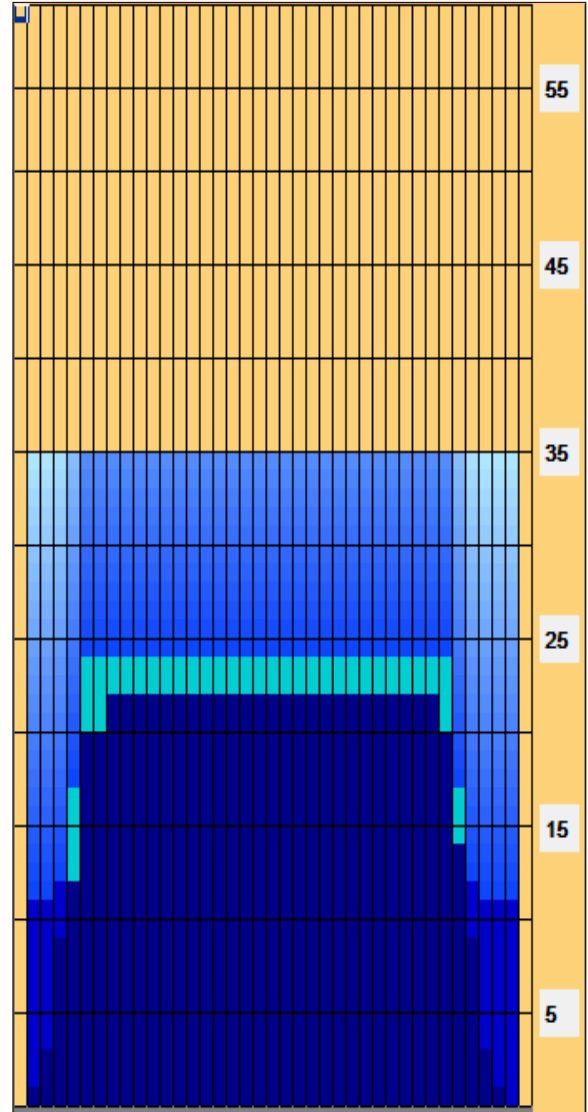
Reverse



Combined



Buff



	Start	Stop	Loads	Speed	Crossed	Start	End	Feet	T.Oil
1	2L	2R	0	26	0	35.0	22.0	-13.0	0
2	8L	8R	1	18	25	22.0	19.5	-2.5	1000
3	6L	7R	2	18	56	19.5	14.4	-5.1	2240
4	6L	6R	1	14	29	14.4	12.5	-1.9	1160
5	4L	5R	1	14	32	12.5	10.6	-1.9	1280
6	2L	2R	1	14	37	10.6	8.7	-1.9	1480
7	2L	2R	0	14	0	8.7	0.0	-8.7	0

Item	3L-7L:18L-18R	8L-12L:18L-18R	13L-17L:18L-18R	18L-18R:17R-13R	18L-18R:12R-8R	18L-18R:7R-3R
Description	Outside Track:Middle	Middle Track:Middle	Inside Track:Middle	Middle:Inside Track	Middle:Middle Track	Middle:Outside Track
Track Zone Ratio	1.58	1	1	1	1	2.05

