

2024 European Championship of Champions - ION



Oil Pattern Distance:	43 Feet	Reverse Brush Drop:	43 Feet	Oil Per Board:	50 uL
Forward Oil Total:	13.7 mL	Reverse Oil Total:	14.35 mL	Volume Oil Total:	28.05 mL
Forward Boards Crossed:	274 Boards	Reverse Boards Crossed:	287 Boards	Total Boards Crossed:	561 Boards

	Start	Stop	Loads	Speed	Crossed	Start	End	Feet	T.Oil
1	2L	2R	2	18	74	0.0	2.5	2.5	3700
2	7L	9R	1	22	25	2.5	5.6	3.1	1250
3	11L	10R	1	22	20	5.6	8.7	3.1	1000
4	3L	3R	1	22	35	8.7	11.8	3.1	1750
5	4L	4R	1	22	33	11.8	14.9	3.1	1650
6	11L	11R	2	22	38	14.9	21.1	6.2	1900
7	12L	12R	2	26	34	21.1	28.4	7.3	1700
8	13L	13R	1	26	15	28.4	32.0	3.6	750
9	2L	2R	0	26	0	32.0	43.0	11.0	0

Forward Reverse More

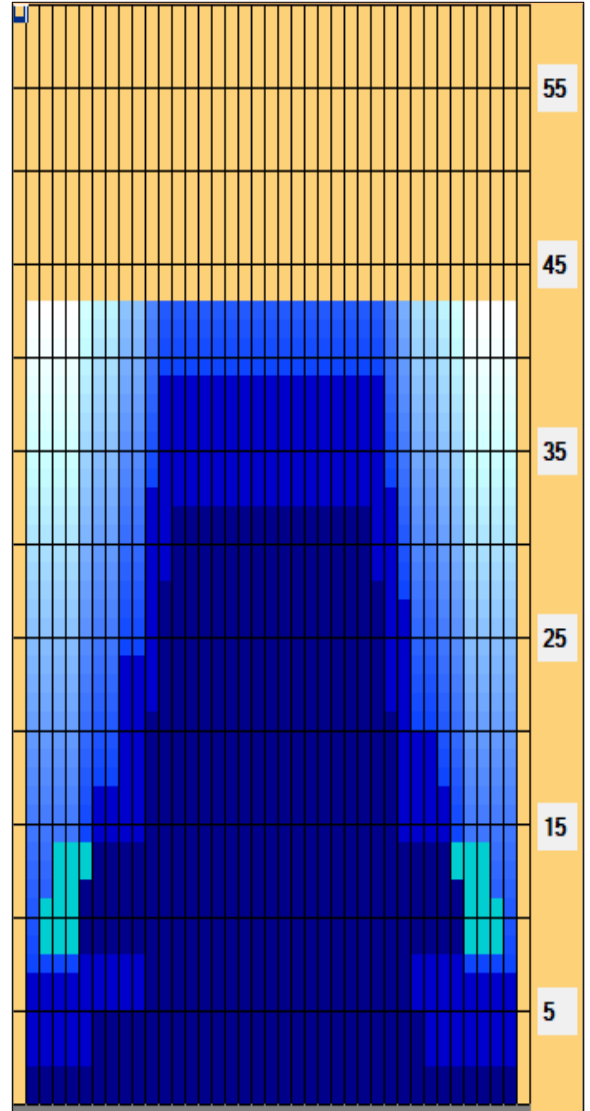
	Start	Stop	Loads	Speed	Crossed	Start	End	Feet	T.Oil
1	2L	2R	0	26	0	43.0	39.0	-4.0	0
2	12L	12R	2	22	34	39.0	32.8	-6.2	1700
3	11L	11R	2	22	38	32.8	26.6	-6.2	1900
4	11L	10R	1	22	20	26.6	23.5	-3.1	1000
5	9L	10R	1	22	22	23.5	20.4	-3.1	1100
6	9L	8R	1	22	24	20.4	17.3	-3.1	1200
7	7L	7R	2	18	54	17.3	12.2	-5.1	2700
8	6L	6R	2	18	58	12.2	7.1	-5.1	2900
9	2L	2R	1	14	37	7.1	5.2	-1.9	1850
10	2L	2R	0	14	0	5.2	0.0	-5.2	0

Forward Reverse More

Conditioner:
Type In or Select One

TransferType:
Type In or Select One

- Forward
- Reverse
- Combined
- Buff



Item Description	3L-7L:18L-18R Outside Track:Middle	8L-12L:18L-18R Middle Track:Middle	13L-17L:18L-18R Inside Track:Middle	18L-18R:17R-13R Middle: Inside Track	18L-18R:12R-8R Middle:Middle Track	18L-18R:7R-3R Middle:Outside Track
Track Zone Ratio	3.71	1.55	1	1	1.53	3.83

