

# 2012 EBT 11 - Storm San Marino Open



**Oil Pattern Distance:** 40 Feet      **Reverse Brush Drop:** 32 Feet      **Oil Per Board:** 50 uL  
**Forward Oil Total:** 16.9 mL      **Reverse Oil Total:** 7.4 mL      **Volume Oil Total:** 24.3 mL  
**Forward Boards Crossed:** 338 Boards      **Reverse Boards Crossed:** 148 Boards      **Total Boards Crossed:** 486 Boards

	Start	Stop	Loads	Speed	Crossed	Start	End	Feet	T.Oil
1	2L	2R	4	10	148	0.0	4.2	4.2	7400
2	8L	8R	2	14	50	4.2	8.1	3.9	2500
3	11L	9R	2	14	42	8.1	12.0	3.9	2100
4	12L	10R	2	18	38	12.0	17.1	5.1	1900
5	14L	11R	2	18	32	17.1	22.2	5.1	1600
6	15L	12R	2	18	28	22.2	27.3	5.1	1400
7	2L	2R	0	18	0	27.3	33.0	5.7	0
8	2L	2R	0	26	0	33.0	40.0	7.0	0

◀ ▶ Forward Reverse More

	Start	Stop	Loads	Speed	Crossed	Start	End	Feet	T.Oil
1	2L	2R	0	30	0	40.0	26.0	-14.0	0
2	14L	11R	1	22	16	26.0	22.9	-3.1	800
3	13L	10R	1	22	18	22.9	19.8	-3.1	900
4	12L	10R	1	22	19	19.8	16.7	-3.1	950
5	11L	9R	1	22	21	16.7	13.6	-3.1	1050
6	2L	2R	2	18	74	13.6	8.5	-5.1	3700
7	2L	2R	0	18	0	8.5	0.0	-8.5	0

◀ ▶ Forward Reverse More

Conditioner:  
Prodigy

TransferType:  
Transfer Brush

Forward



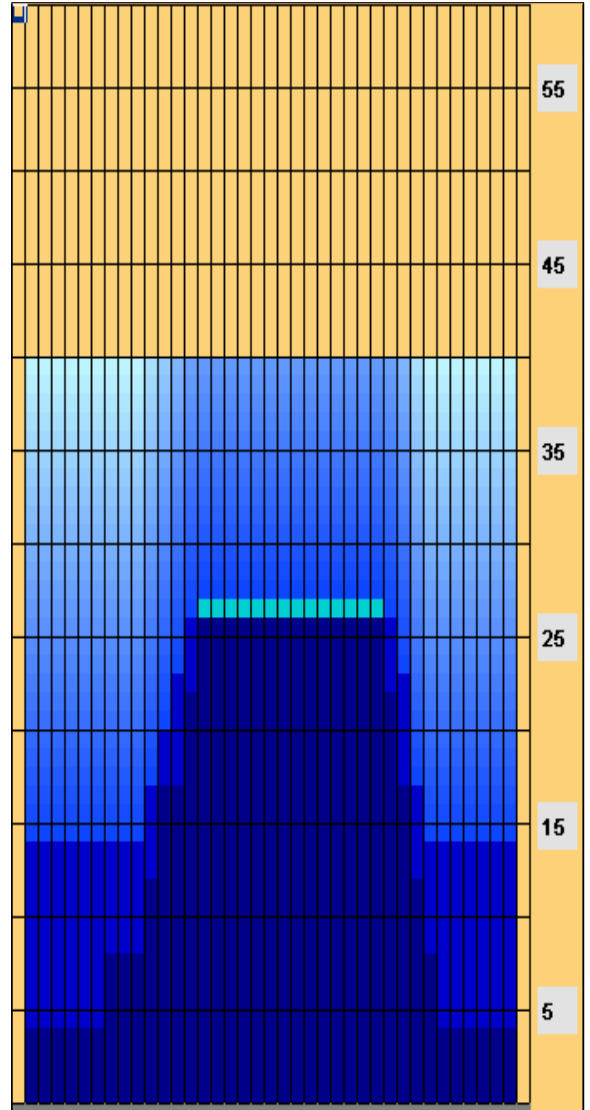
Reverse



Combined



Buff



Item	3L-7L:18L-18R	8L-12L:18L-18R	13L-17L:18L-18R	18L-18R:17R-13R	18L-18R:12R-8R	18L-18R:7R-3R
Description	Outside Track:Middle	Middle Track:Middle	Inside Track:Middle	Middle: Inside Track	Middle:Middle Track	Middle:Outside Track
Track Zone Ratio	3.33	2.04	1.08	1	1.39	3.33

