

# CHANDRA OPEN 2016



**Oil Pattern Distance:** 40 Feet      **Reverse Brush Drop:** 34 Feet      **Oil Per Board:** 50 uL  
**Forward Oil Total:** 12.5 mL      **Reverse Oil Total:** 11.05 mL      **Volume Oil Total:** 23.55 mL  
**Forward Boards Crossed:** 250 Boards      **Reverse Boards Crossed:** 221 Boards      **Total Boards Crossed:** 471 Boards

	Start	Stop	Loads	Speed	Crossed	Start	End	Feet	T.Oil
1	2L	2R	2	14	74	0.0	1.9	1.9	3700
2	8L	8R	2	18	50	1.9	7.0	5.1	2500
3	9L	9R	3	22	69	7.0	16.3	9.3	3450
4	11L	11R	3	26	57	16.3	27.3	11.0	2850
5	2L	2R	0	26	0	27.3	34.0	6.7	0
6	2L	2R	0	30	0	34.0	40.0	6.0	0

Conditioner:  
Type In or Select One

TransferType:  
Type In or Select One

Forward



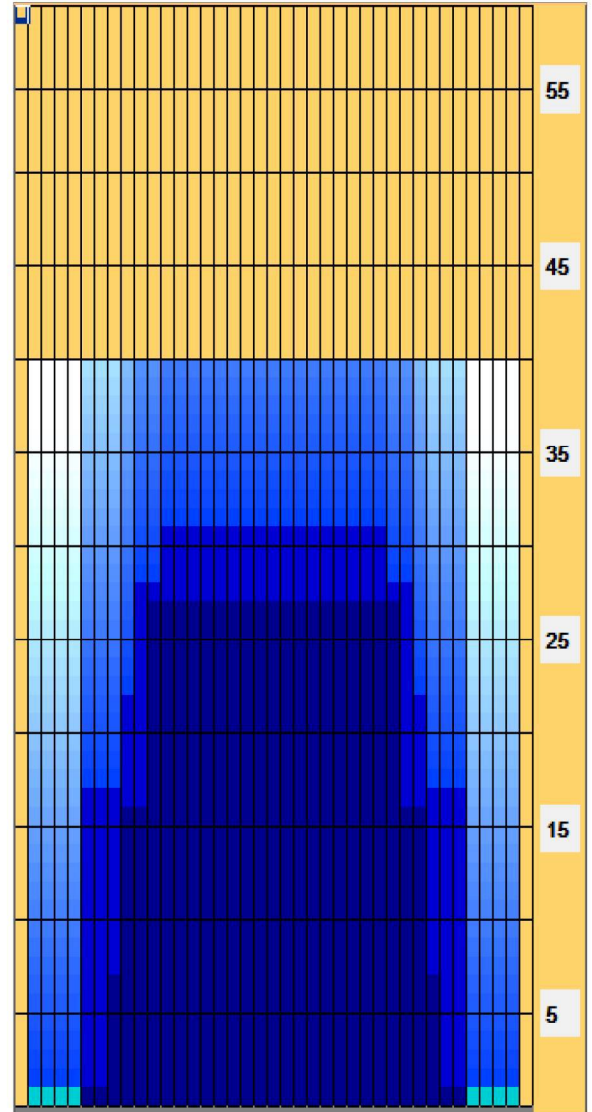
Reverse



Combined



Buff



	Start	Stop	Loads	Speed	Crossed	Start	End	Feet	T.Oil
1	2L	2R	0	30	0	40.0	31.0	-9.0	0
2	12L	12R	1	22	17	31.0	27.9	-3.1	850
3	10L	10R	2	22	42	27.9	21.7	-6.2	2100
4	9L	9R	2	18	46	21.7	16.6	-5.1	2300
5	6L	6R	4	18	116	16.6	6.4	-10.2	5800
6	2L	2R	0	14	0	6.4	0.0	-6.4	0

Item	3L-7L:18L-18R	8L-12L:18L-18R	13L-17L:18L-18R	18L-18R:17R-13R	18L-18R:12R-8R	18L-18R:7R-3R
Description	Outside Track:Middle	Middle Track:Middle	Inside Track:Middle	Middle:Inside Track	Middle:Middle Track	Middle:Outside Track
Track Zone Ratio	5.28	1.3	1	1	1.3	5.28

